

Hilgeland  
Kieserling  
EWMenn  
Nutap

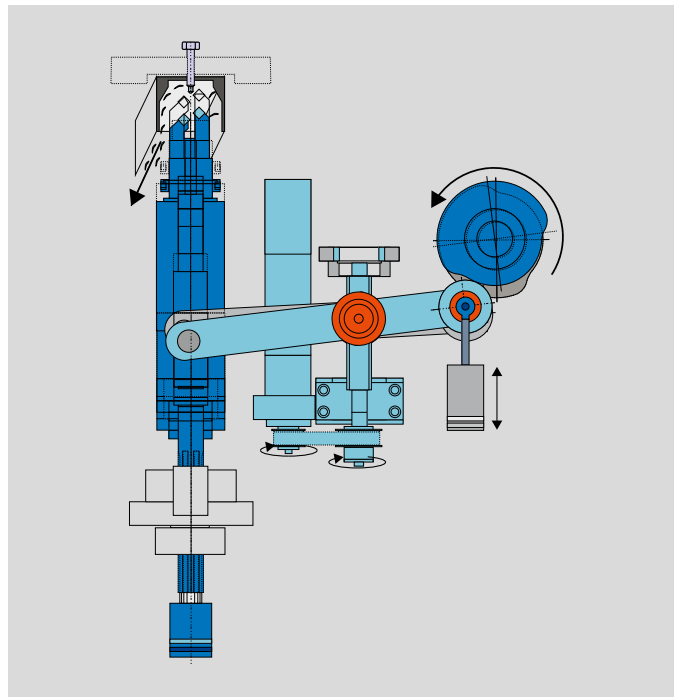
Automatic Pointer SKM  
Brand HILGELAND



The SKM logo is displayed in white text on a dark blue rectangular background.

The Automatic Pointer SKM is used for machining shaft ends, e.g. in accordance with DIN 78. Boreholes can also be made in the shaft end.

- Multi-purpose machining of shaft end
- Slots for clamping collars (option)
- Option for production of headless parts with a camera for positional feeding
- Ease of use through stored memory adjustments (recallable data)
- Shaft clamping in the lower part, where the torque moment is
- Chip collection by magnetic filtration unit
- Finished parts are ejected free of chips
- Machine can run wet or dry – with or without coolant



▲ Advancing spindle

# Automatic Pointer SKM Brand HILGELAND

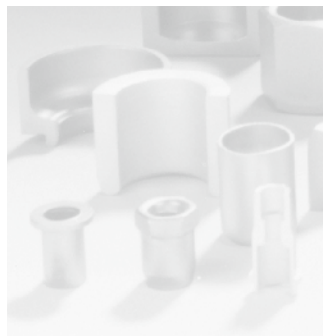


<b>Technical Data</b>		<b>SKM 10</b>	<b>SKM 16</b>
Shank diameter	mm	2.0 – 10.0	4.0 – 14.0 (16.0)
Diameter to pass feed rails	max. mm	12	16
Shaft length	mm	10 – 180	10 – 220
Spindle traverse	max. mm	20.0	20.0
Spindle speed variable	min. <sup>-1</sup>	12,000	10,000
Output	max. pcs/min.*	300	250
Machine weight	approx. kg	3,200	3,200

\*) The output depends on material and product.



Hilgeland  
Kieserling  
EWMenn  
Nutap



**WAFIOS**  
**Umformtechnik GmbH**

Precision Parts  
Forming Machinery

**Made in Germany**

Im Rehsiepen 35, 42369 Wuppertal  
Phone +49 (202) 46 68-0  
Fax +49 (202) 46 68-225

[sales@wafios-umformtechnik.de](mailto:sales@wafios-umformtechnik.de)  
[www.wafios-umformtechnik.com](http://www.wafios-umformtechnik.com)  
Germany

The specifications are not binding as  
these could vary on account of technical  
developments.

02.2018