

Hilgeland
Kieserling
EWMenn
Nutap

Nut Tapper MAS F
Brand NUTAP



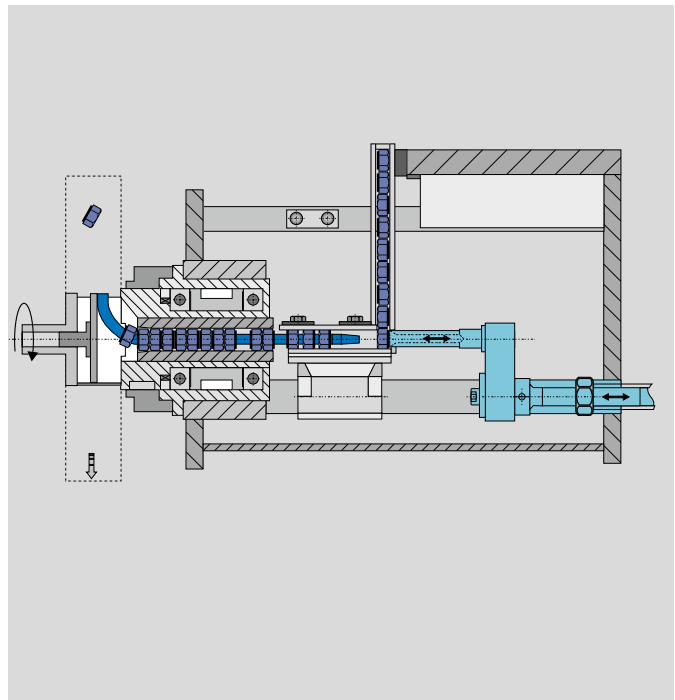
MAS



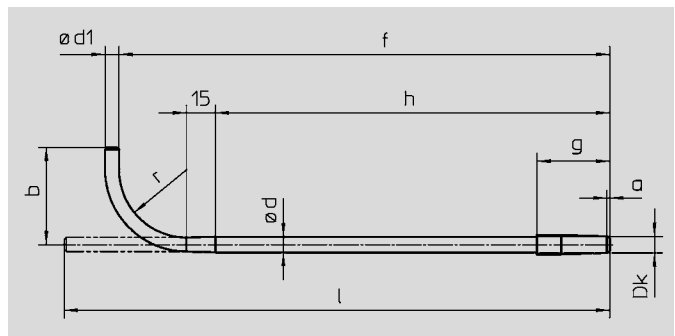
MAS

The nut tapper MAS F with double spindle is based on the well proven bent shank tap technology as well as on the advantage of modern drive and control technologies.

- Simple operation and quick change of tooling for different part configurations and pitch sizes
- Ease of use through stored memory adjustments (recallable data)
- Double-shaft guidance for the toolholder guarantees optimal perpendicularity (TIR) and tight thread tolerances
- A round nut clamping system is also available
- 100% control with tap monitoring system possible



▲ Tool arrangement



▲ Bent shank tap

Nut Tapper MAS F

Brand NUTAP

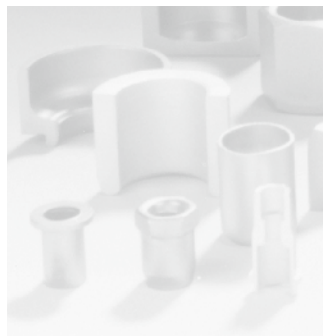


Technical Data	MAS 06 F	MAS 14 F	MAS 33 F
Number of spindles	2	2	2
Size range metric	M3 – M6	M5 – M14	M12 – M33
Size range inch	N° 2 – ¼"	¼" – ½"	½" – 1¼"
Outside diameter max. mm	15	30	58
A/F square max. mm	10	21	40
A/F hex. max. mm	13	24	50
A/F octagonal max. mm	13	27	48
Power of spindle motor kW	1.1	5.5	7.5 (11)
Variable speed 1/min	500 – 4800	450 – 4100	200 – 1800
Output (standard hex. nut) max. pcs/min.*	310	300	120
Coolant tank capacity l	200	230	380
Over-all-dimensions (L x W x H) mm	1650 x 980 x 1900	1800 x 1000 x 2030	2500 x 1400 x 2300
Machine weight approx. kg	1600	1900	3200

*) The output depends on material and product.



Hilgeland
Kieserling
EWMenn
Nutap



WAFIOS
Umformtechnik GmbH

Precision Parts
Forming Machinery

Made in Germany

Im Rehsiepen 35, 42369 Wuppertal
Phone +49 (202) 46 68-0
Fax +49 (202) 46 68-225

sales@wafios-umformtechnik.de
www.wafios-umformtechnik.com
Germany

The specifications are not binding as
these could vary on account of technical
developments.

02.2018